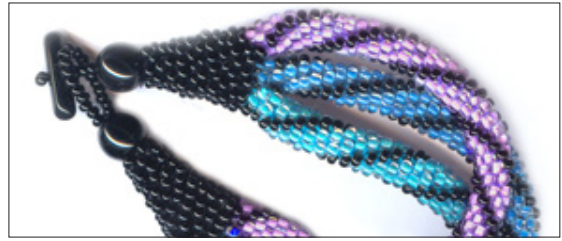


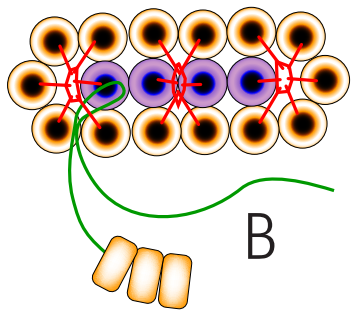
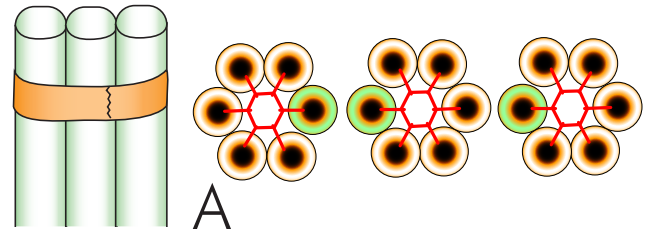
## Joining three tube ends to reduce to one end

This technique allows the joining of three separate six-around tubes of bead crochet into one end, which is then reduced prior to finishing.



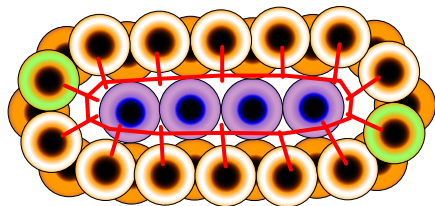
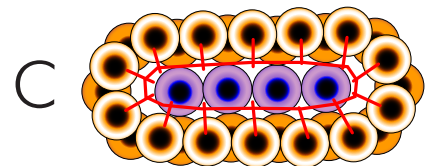
Complete the tube crochet so each of the three tubes is the desired length. Bind off the last stitch of the working end, then bury the thread tails from all three within the fibers of the tube.

Position the three ends together so the last stitch of each tube (shown in green) is on the inside of the assembly.

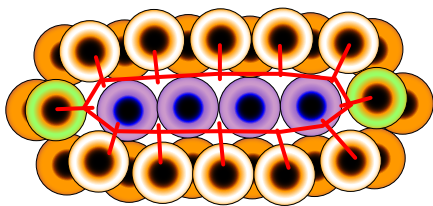
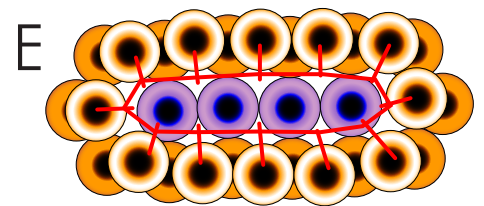


Pull up a new thread as shown in diagram B. Crochet all around the taped tubes, working only in the beads shown as light yellow in diagram B. The beads shown as purple will remain uncrocheted and will recede into the center of the new 14-bead tube.

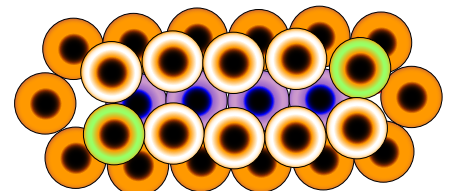
Diagram C shows how the tube will look with the new round crocheted. Add one additional round of 14 beads.



In the next round, slip stitch without a bead in the beads shown in green. Add one more round, but skip over the slip stitches without beads, thereby reducing the number of beads in the round to twelve as shown in diagram E.



In the next round, slip stitch without a bead in the beads shown in green (diagram F). In the next round after that, skip over the slip stitches, thereby reducing the number of beads in the new round to ten.



Continue in this manner, reducing by one bead at each end in every other round. Diagram G shows the beads in which you should slip stitch when you have ten beads in the round. Continue until there are only six beads in the round (diagram H). At that point, you may continue to any desired length. When you're satisfied with the length, crochet one round of slip stitch only, without beads. This will cause the beads of the last round to lay horizontally, as the beads of all the completed rounds lay.

